

FRONTMATEC

IMPROVED UPTIME AND
TROUGHTPUT WITH S2



QUIT GUESSING ABOUT YOUR PRODUCTION STOPS

Have you ever considered the value of 10 lost production hours?

- In direct wages
- Replanning of production
- Work overtime
- Bad customer experience

Production down time will never come back – it is lost forever. Therefore, it is always crucial to find the reason behind your production stops - fast. Our SCADA system, S2, can help you with exactly that.

Fast problem solving

Your production has stopped, and you want to get it back in operation – fast. With S2, you have a tool which immediately gives you a graphical overview of what, why and where. Never again you will see your colleagues running in circles in case of a breakdown.

Real reason behind production stops

In a busy day, the immediate problems are solved so

production runs as much as possible. S2 provides you with a fantastic troubleshooting tool which points out what issues you should solve to improve your uptime.

S2 logs all activities and events which makes it possible for you to search across all these data and find the connection between the data and the stops/faults. This makes it very easy to troubleshoot and search in your historical data. S2 lets you analyze any stops, reasons, and connections between different parameters that creates stops.

Which equipment increases your costs?

S2 provides you with an overview of your stops and maintenance time for all your equipment.

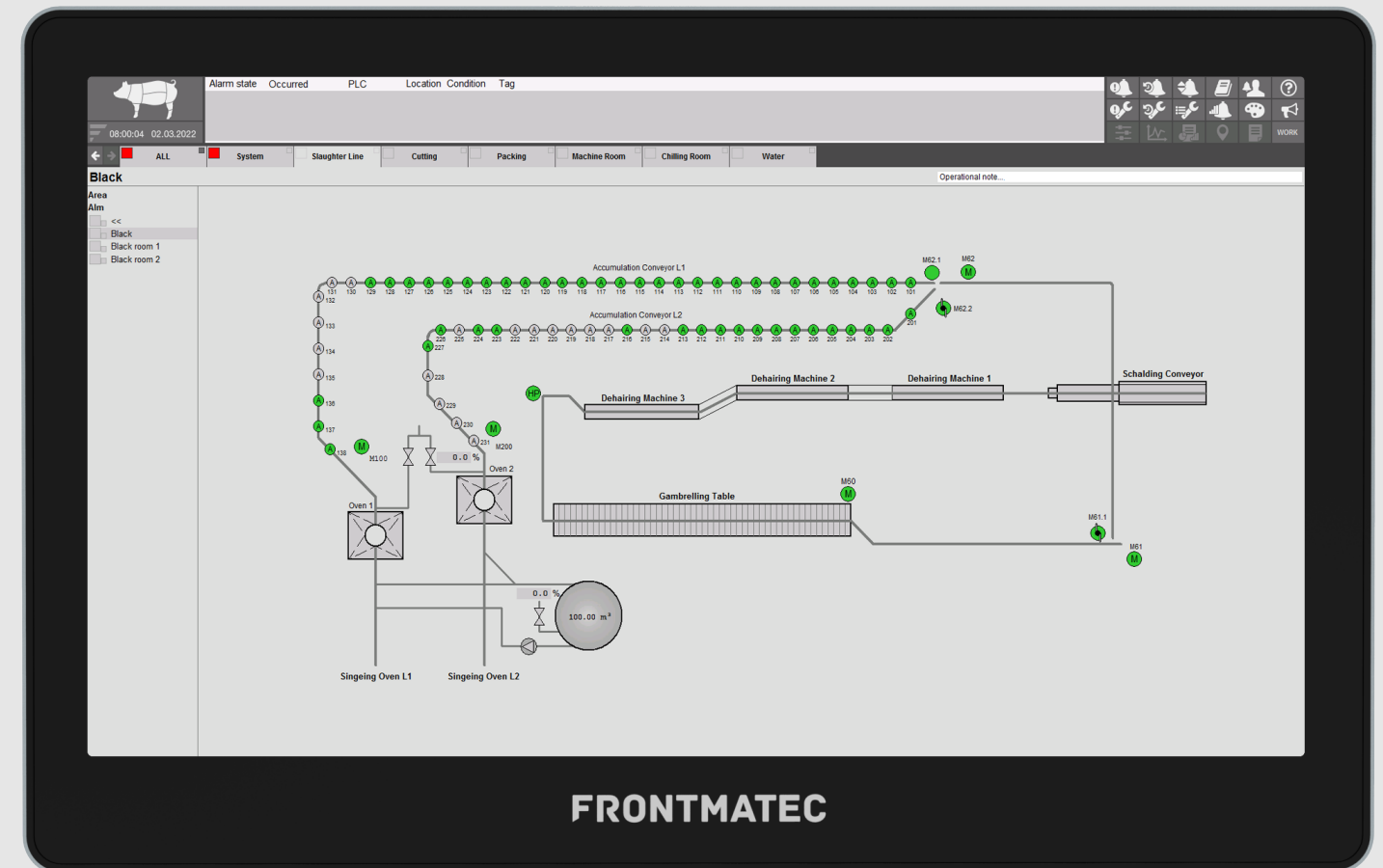
Buy an assurance against breakdowns

Preventive maintenance is crucial to avoid breakdowns. With S2 you will remember to get the maintenance done – exactly when needed. The status of the maintenance situation will be visible to everyone.



S2 - your modern SCADA system

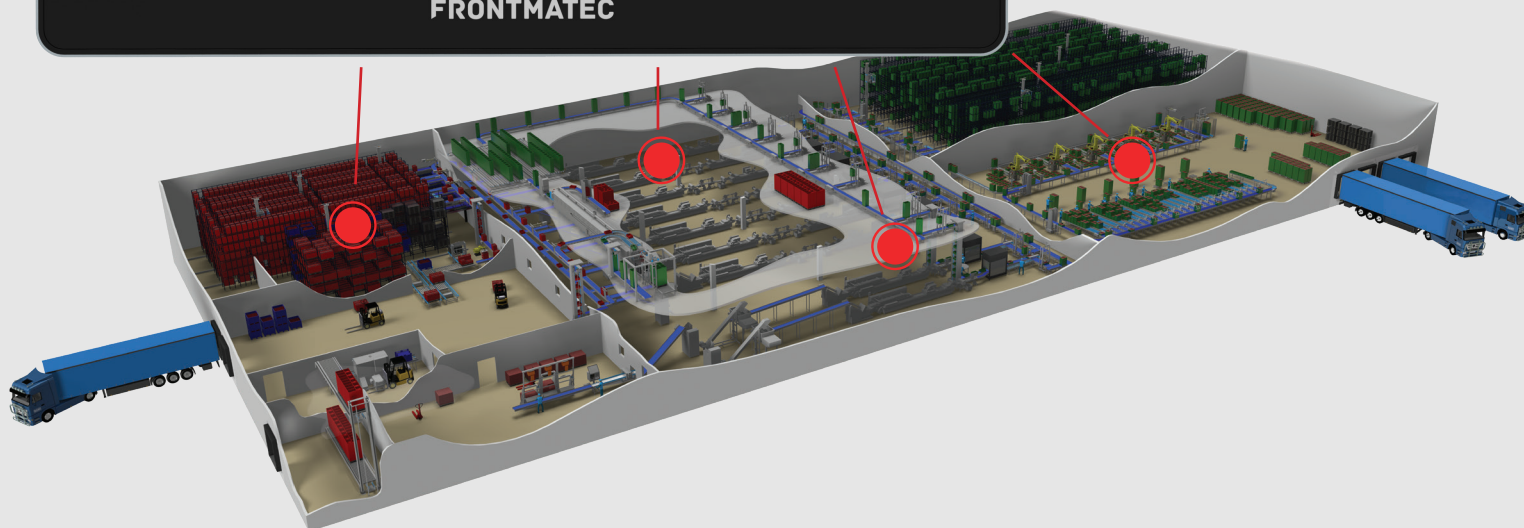
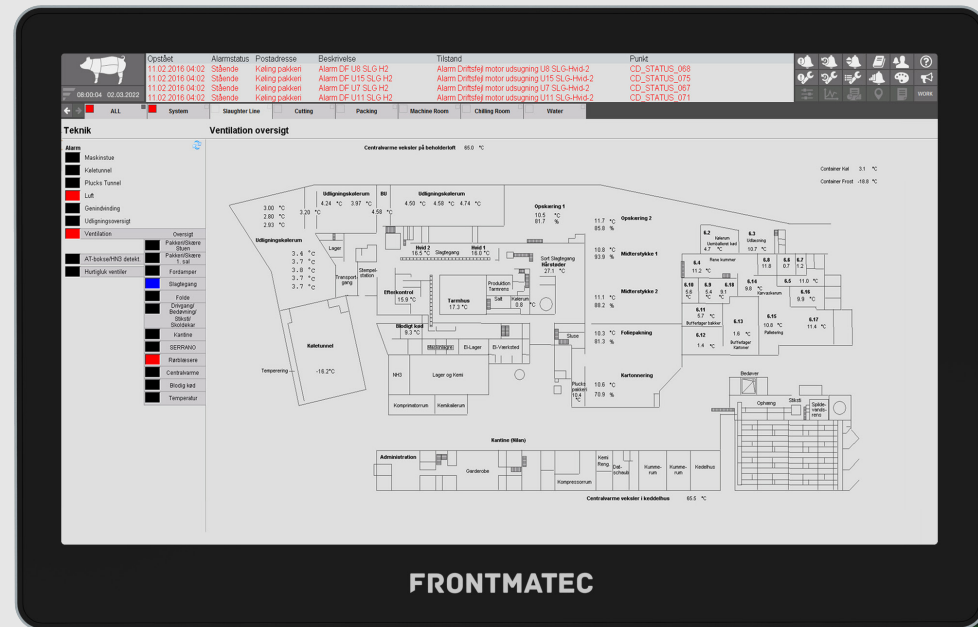
S2 is a modern SCADA system based upon standard Microsoft technology. The system comes with an integrated maintenance module and full database access which gives you the opportunity to save historical data.





S2 connects to your components

S2 is connected to all your components in your production. Thus, S2 is able to display data from these centrally which also makes it possible for you to control the components centrally.



INCREASE YOUR UPTIME WITH S2

How long time does it take from a breakdown arise until you have found the location and the cause behind it? S2 provides you with a system, which can minimize the time used for breakdown and faults!

1) Locating the breakdown or fault

S2 gives you a graphical overview of all your production areas. In case of a breakdown, you will immediately be able to locate the breakdown or fault.

2) Locating the reason behind the breakdown or fault

When knowing where to find the fault, it is also important to know the reason behind it. S2 shows you exactly what the cause is, e.g. faults on components, sensors, pushers, network, pulled process stops or pulled emergency stops.

Being able to act on real time production knowledge can ensure that down times are minimized.

Assurance against breakdowns

Online, easy to use maintenance plans are a crucial element to overall effectiveness. S2 offer you this possibility as well. The S2 maintenance module gives you:

- Maintenance of your equipment fitted to the exact wear and tear, based on time in operation, number of starts, increased power consumption etc.
- Preventive maintenance in due time to prevent breakdowns

At any given time, you will be able to monitor your current and historical job list for your maintenance. The job list gives an overview of planned, current, completed or deleted jobs.

Altogether, this means that your maintenance crew can be fast and accurate in problem solving and carry out your preventive maintenance – quick and efficiently.

FRONTMATEC BIS - DATA CULTURE AND DIGITAL TRANSFORMATION

With S2, you are also guaranteed a sublime reports and statistics module – Frontmatec BIS (Business Intelligence Services).

S2 gives you a complete range of tools and services that you can use to create, implement and manage reports for your organization. Via S2, you can retrieve data in Frontmatec BIS, which gives you a wealth of advanced reporting features combined with graphical illustrations.

S2 makes it possible for you to receive important reports and statistics about important KPIs such as:

- Alarms – which equipment generates most faults
- Energy consumption increase/decrease
- Stop causes – stops, how many times, duration
- Deviation reports – does any KPI deviate from normal
- Maintenance “Job”
- RFID reader efficiency etc.

The S2 reporting module also offers you quality control reports (documentation) about:

- Temperature monitoring in chill rooms
- Temperature control of washing water
- Any other quality parameter you want to monitor

The reports are accessible in the S2 manager, but also in your web browser on your PC.

S2 on your smartphone


Frontmatec has developed an app that allows you to follow and use S2 on your smart device.

- Alarms
- Maintenance
- Control tags in the PLC
- Dynamic web map
- Forms for multiple-choice request

The applications are flexible and will be customized to fit your needs.



FRONTMATEC



Frontmatec Control Systems covers the group's solutions within MES, industrial IT, SCADA and automation solutions.

Frontmatec develops the world's leading tailor-made solutions for automation in food industry, other hygiene-sensitive industries and the supply industry. Our story stretches back to 1931, which today makes us market leader with over 20 offices on worldwide and thousands of plants sold globally.

Frontmatec A/S
Østerbro 5
7800 Skive
Tlf. +45 975 250 22
controls.frontmatec.com

Odense
Hvidkærvej 2c

Smørum
Hassellunden 9

Stilling, Skanderborg
Niels Bohrs Vej 17b

Sønderborg
Nørrekobbøl 11