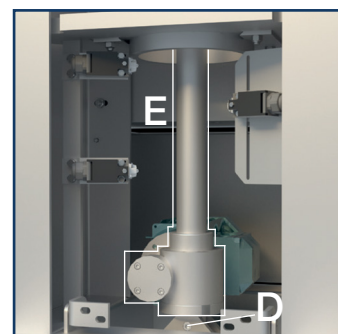
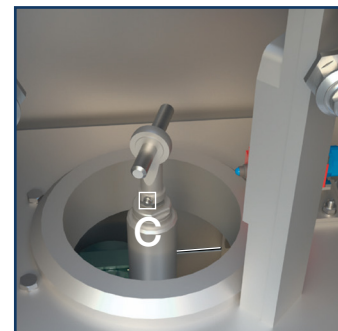
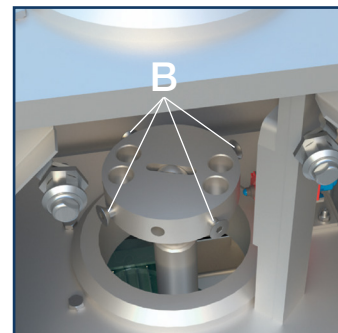
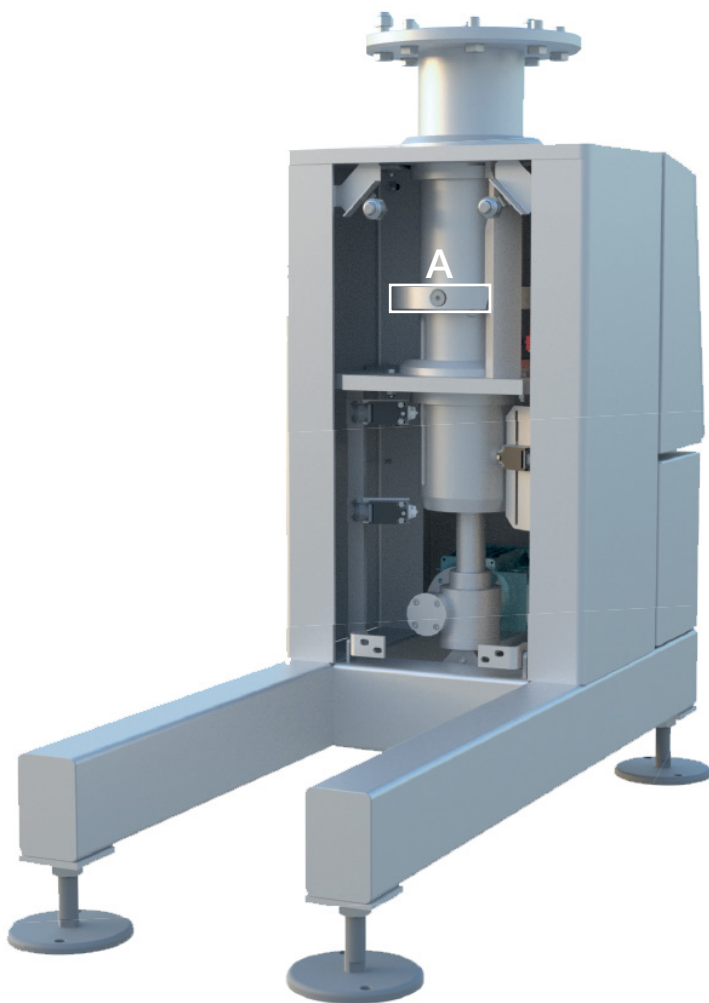


SERVICE SOLUTIONS // HOW TO

HOW TO REPLACE THE ACTUATOR ON THE RSSL 108 - 109 - 110

1. Dismantle the 4 bolts to remove the ring - position A
2. Dismantle the 4 bolts to disassemble the connected bracket for the actuator - position B
3. Lift the column off
4. Dismantle the screw and disassemble the joint - position C
5. Dismantle the bottom screw - position D
6. Take out the current actuator and replace it with a fresh actuator - position E
7. Re-assemble by going through all positions in reverse



CONTACT

Central/Eastern Europe
+49 252 185 070
service.de@frontmatec.com

Northern Europe, Kolding
+45 36 999 099
service.kol.dk@frontmatec.com

Northern Europe, Tandslet
+45 74 407 644
service.tan.dk@frontmatec.com

Southern Europe
+34 932 643 800
service.es@frontmatec.com

Western Europe
+31 886 294 000
service.nl@frontmatec.com