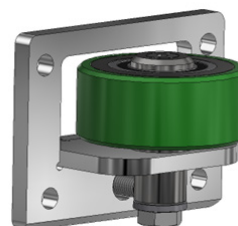
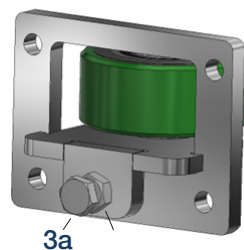
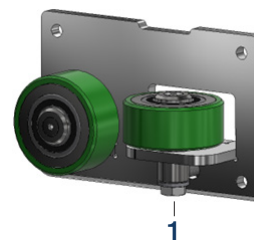
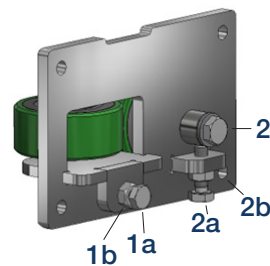
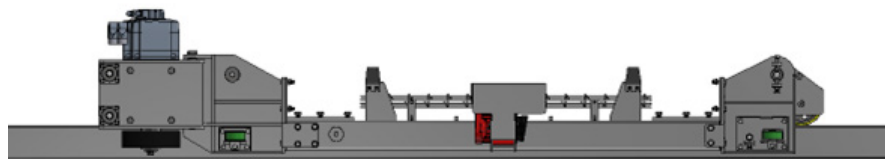


## SERVICE SOLUTIONS // HOW TO

# HOW TO ADJUST THE SUPPORT WHEELS ON YOUR KDEL

Adjust the support wheels in the front and rear end of the bottom wagon

1. Ensure the wagon is centered on the drive rail
2. Loosen the bolt underneath the support wheels (**no. 1, 2 and 3**)
3. Loosen the lock nuts (**no. 1a, 2a and 3a**)
4. Start by adjusting the bolt clockwise on the horizontal support wheel in the front and rear end of the wagon (**no. 1b and 3b**)
5. The horizontal support wheel can not touch the drive rail. There needs to be a 1-2 millimeters distance, and you need to be able to spin the support wheel with your fingers
6. Now adjust the bolt clockwise on the vertical support wheel
7. The vertical support wheel can not touch the drive rail. There needs to be a 1-2 millimeters distance, and you need to be able to spin the support wheel with your fingers
8. Tighten the lock nuts (**no. 1a, 2a and 3a**) and the bolt underneath (**no. 1, 2 and 3**)



## CONTACT

Central/Eastern Europe  
+49 252 185 070  
service.de@frontmatec.com

Northern Europe, Kolding  
+45 36 999 099  
service.kol.dk@frontmatec.com

Northern Europe, Tandslet  
+45 74 407 644  
service.tan.dk@frontmatec.com

Southern Europe  
+34 932 643 800  
service.es@frontmatec.com

Western Europe  
+31 886 294 000  
service.nl@frontmatec.com