

# FRONTMATEC

A Fortifi Company

## SUPERVISORY CONTROL AND DATA ACQUISITION



WEB, APP AND DESKTOP



# WORK SMARTER – NOT HARDER SCADA MADE EASY

S2 is a comprehensive, modular system designed for control, regulation, and monitoring. It features a graphical user interface, database, and versatile communication capabilities with other products.

S2 is a single, integrated software package used by all our clients. Its modular design ensures full integration of all components.

Tags can be easily filtered and grouped by categories like zones, substations, drivers, and component types, facilitating seamless interaction with other systems.

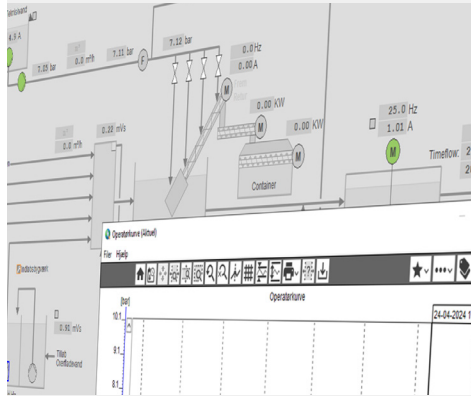
S2 efficiently manages automation equipment and complex installations, meeting the modern enterprise's demands for digitalization.

## Why S2?

- Flexible yet standardized modular SCADA
- Data stored in an accessible SQL database
- Seamless integration with other systems
- No need for extra programming
- Option for comprehensive service agreements



## REALTIME SUPERVISORY



S2 offers a simple assembly of graphics and dashboards that ensures a clear overview of even the most complex automation solutions. Measurements are updated automatically, and historical data can be traced through graphs and reports. Color indications and symbols draw attention.

### YOU GET:

- Easy assembly of graphic elements
- Standardized graphical expression with color templates
- High recognizability



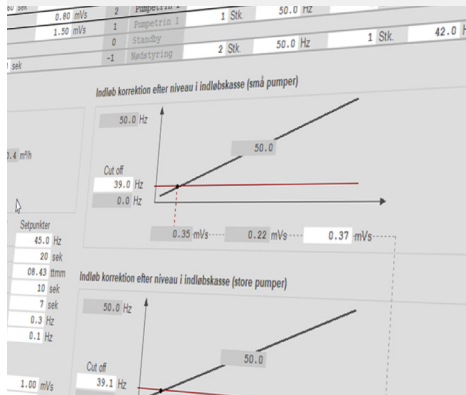
## REMOTE OPERATION



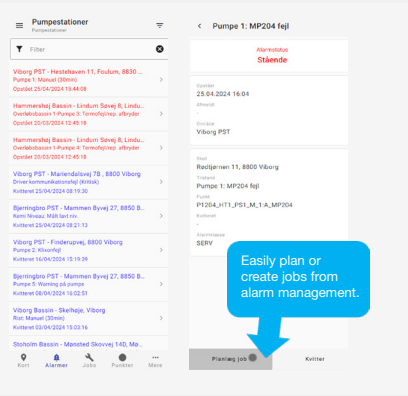
Take control. With S2, you can interact with all types of industrial equipment. Easily start, stop, and adjust motors, pumps, and valves directly from images. Advanced adjustments of set points and control parameters are straightforward. Manage your facility from a desktop, web, and app anytime, anywhere.

### YOU GET:

- Integration with all types of equipment
- Easy operation through images
- Advanced adjustments of set points



## ALARM MANAGEMENT



Gain from an advanced alarm managements solution. Our scheduling system sends alarms and notifications to the appropriate personnel. Users receive personal alarm lists with only relevant alarms. Prioritize and sort alarms and improve error handling.

### YOU GET:

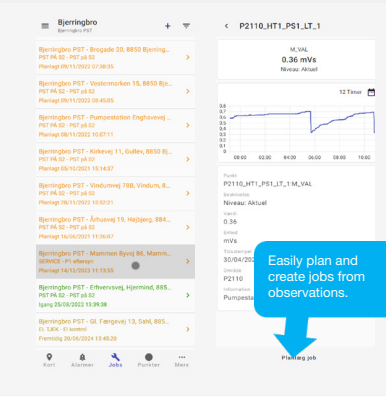
- Automatic alarm and notification dispatch
- Personal alarm lists
- Prioritization and sorting of alarms
- Snooze and inhibit alarms

### Built-in: Breakdown-maintenance



By creating jobs directly form alarms you always get the fastest possible reaction to any malfunction operation. You get: Breakdown maintenance by design

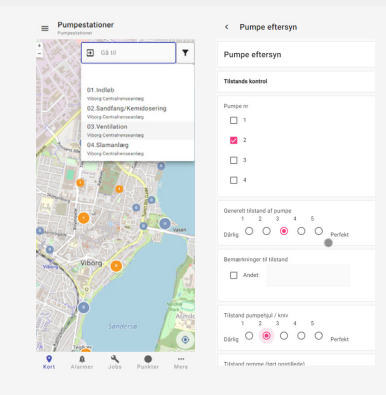
## JOB MANAGEMENT



Optimize your workday with S2's efficient job management module, which provides a quick overview of all your tasks. Easily control your facility and manage tasks from anywhere, at any time. With options for parallel work and scheduling, you enhance your productivity and efficiency.

### YOU GET:

- Efficient job management
- Capability for parallel work
- Create job instruction wizards



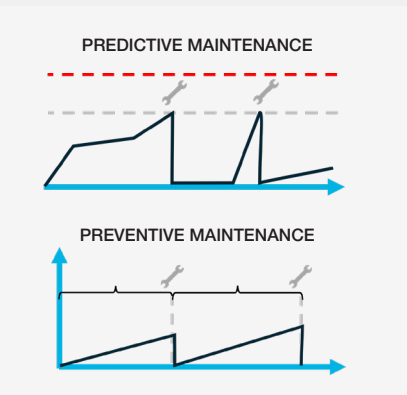
## MAINTENANCE



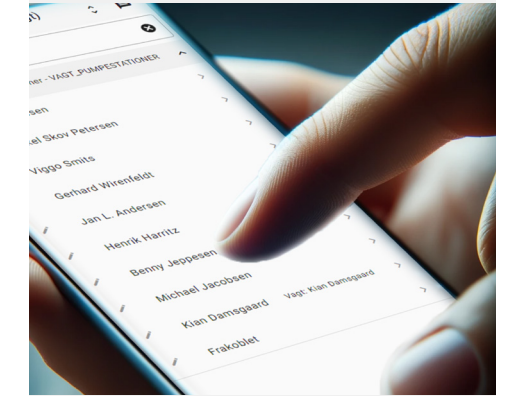
Stay ahead with proactive maintenance. Gain complete control over your facilities by planning effective maintenance based on data such as start times, operating hours, and energy usage. Efficiently manage and distribute maintenance jobs with GPS coordinates and ensure easy access to DDS documentation.

### YOU GET:

- Cost-effective maintenance
- Data-driven maintenance
- Easy distribution of maintenance tasks



## STAFF SCHEDULING



Optimize your daily scheduling with our integrated module, which offers simplicity along with advanced configuration options. Easily manage calendars, roles, and areas. Create a flexible scheduling system tailored to your needs.

### YOU GET:

- Simple daily scheduling with advanced features.
- Efficient management of calendars, roles, and areas for optimal planning.





## DATA COLLECTION



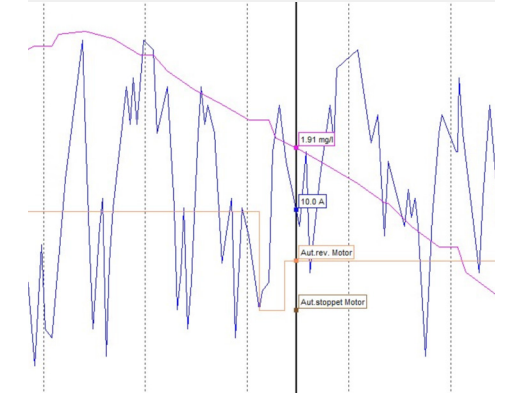
S2 excels in data collection from a wide range of sources with built-in drivers that communicate with technical equipment regardless of protocol. Expand your capabilities further with S2's C# script driver, allowing for the seamless creation of custom drivers for communication as needed.

- YOU GET:**
- Data collection from various sources
  - Built-in drivers for technical equipment
  - Flexibility with S2's C# script driver for customization



- Drivers:**
- OPC
  - PLCs: Siemens, Rockwell - Allen Bradley, Schneider, ABB, OMRON, Modbus
  - SQL
  - API/Rest/MQTT/JSON RPT/Socket
  - Azure/AWS/GCP
  - Excel/XML/JSON/CSV
  - C# script driver (DYI)
  - ...
- You name it!

## HISTORICAL DATA TRENDS



Gain insights with historical data charts. S2's powerful graphing tool is essential for any automation business. Collect graph values easily through point-and-click in graphical monitoring and visualize them as graphical curves. Integrate all modules to view all types of data.

- YOU GET:**
- Insights into automated installations
  - Analysis of historical data trends
  - Easy collection of graph values via point-and-click (incl. export to excel)



## DATA INTELLIGENCE

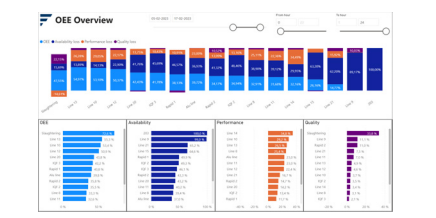
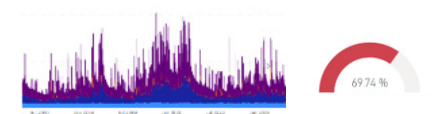
As raw data passes through the system, high-quality data is generated, transforming basic inputs into actionable insights.



**S2 Data Intelligence:**  
Validating, calculating, filling the gaps, removing spikes and fixing abnormal data.

S2's built-in Data Intelligence technology processes analysis-ready data directly within the system. This cost-efficient, versatile approach is ideal for use with advanced BI platforms. Dashboards appear in various strategic locations, constantly emphasizing the need for reliable, high-quality data.

- YOU GET:**
- In-system processing of analysis-ready data for cost efficiency
  - Versatile dashboard displays for executive offices or operations centers





# FRONTMATEC

A **Fortifi** Company

Got curious?  
Don't hesitate - call  
Frontmateg today

Frontmateg Control Systems covers the the group's solutions within MES, industrial IT, SCADA and automation solutions. Frontmateg develops world-leading customized solutions for automation in the food industry, other hygiene-sensitive industries and the utilities industry. Our history dates back to 1931, which today makes us a market leader with over 20 offices worldwide and thousands of systems sold globally.

Frontmateg A/S  
Østerbro 5  
7800 Skive  
Tlf. +45 975 250 22  
[controls.frontmateg.com](https://controls.frontmateg.com)

Odense  
Kratholmvej 62c

Smørum  
Hassellunden 9

Stilling, Skanderborg  
Niels Bohrs Vej 17b

Sønderborg  
Nørrekobbøl 11